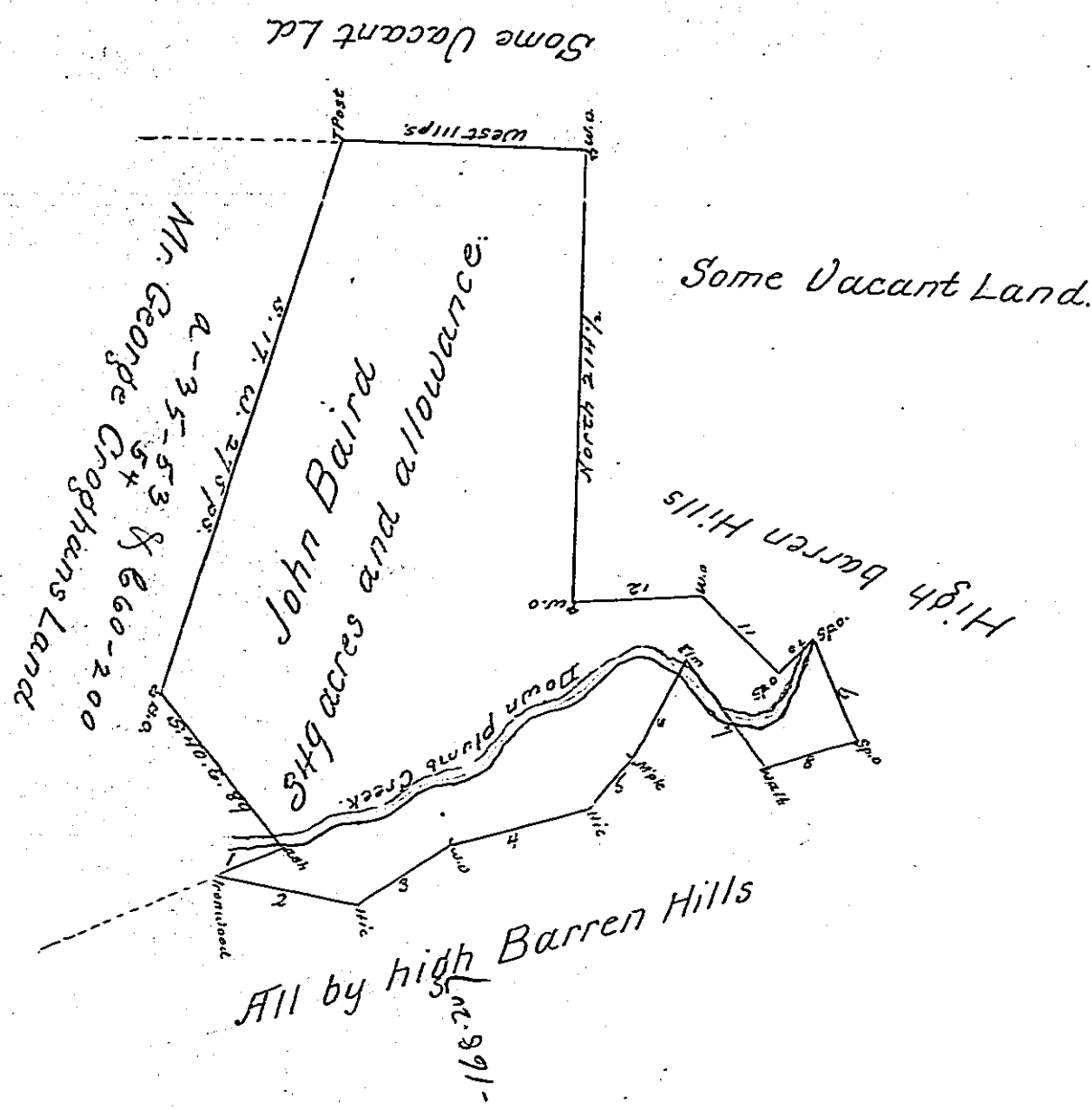


No. of C.	Courses of Each No	Distance
1.	S. 66. W.	35
2.	S. 81. E.	71
3.	N. 55. E.	52
4.	N. 77. E.	67
5.	N. 42. E.	30
6.	N. 27. E.	54
7.	S. 40. E.	62 1/2
8.	N. 71. E.	42
9.	N. 26. W.	50
10.	S. 41. W.	20
11.	N. 48. W.	53
12.	S. 86. W.	62



In pursuance of an application & order of Survey dated the 3d. of April 1769 & Number 1092 Surveyed the above Tract of Land containing three Hundred and forty nine acres with an allowance proportioned to 6 cents. Situate about a mile above the mouth of Plumb Creek, Survey d. for John Baird October the 27th 1769.

R.
Robert McCreas
D.S.

To John Lukens Esqr
S. Genl.

IN TESTIMONY that the above is a copy of the original remaining on file in the Department of Internal Affairs of Pennsylvania, made conformably to an Act of Assembly approved the 16th day of February, 1833, I have hereunto set my Hand and caused the Seal of said Department to be affixed at Harrisburg, this first day of October 1901

James W. Pitt
Secretary of Internal Affairs.